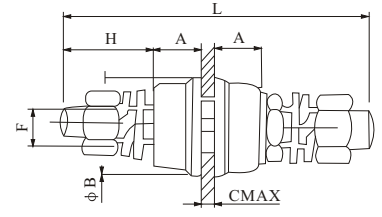
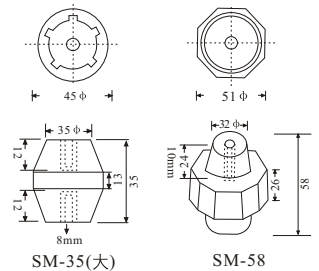
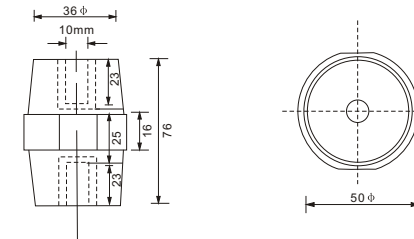
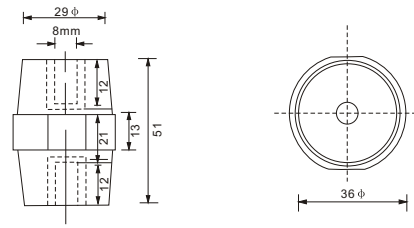
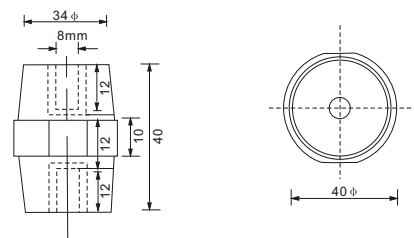
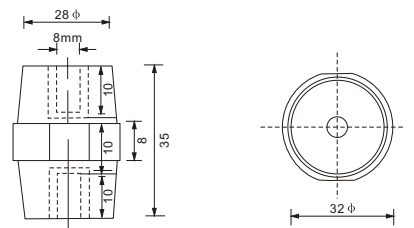
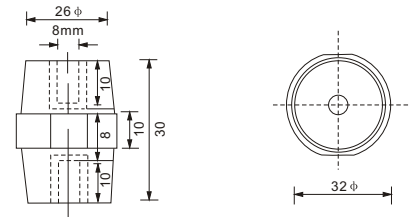
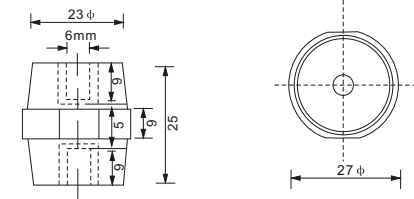


## 绝缘子系列 BUS-BAR INSULATORS SERIES



### SM-25

TENSILE STRENGTH(LBS)	TORGUE STRENGTH(FT LBS)	VOLTAGE WITHSTAND(KV)	SCRE (MM)	WEIGHT (G)
500	6	6	6	28

### SM-30

TENSILE STRENGTH(LBS)	TORGUE STRENGTH(FT LBS)	VOLTAGE WITHSTAND(KV)	SCRE (MM)	WEIGHT (G)
550	8	8	8	44

### SM-35

TENSILE STRENGTH(LBS)	TORGUE STRENGTH(FT LBS)	VOLTAGE WITHSTAND(KV)	SCRE (MM)	WEIGHT (G)
600	10	10	8	50

### SM-40

TENSILE STRENGTH(LBS)	TORGUE STRENGTH(FT LBS)	VOLTAGE WITHSTAND(KV)	SCRE (MM)	WEIGHT (G)
650	10	12	8	86

### SM-51

TENSILE STRENGTH(LBS)	TORGUE STRENGTH(FT LBS)	VOLTAGE WITHSTAND(KV)	SCRE (MM)	WEIGHT (G)
1000	20	15	8	83

### SM-76

TENSILE STRENGTH(LBS)	TORGUE STRENGTH(FT LBS)	VOLTAGE WITHSTAND(KV)	SCRE (MM)	WEIGHT (G)
1500	40	25	10	233

### P<sub>i</sub>/P-6、P<sub>i</sub>/P-8、P<sub>i</sub>/P-10、P<sub>i</sub>/P-12

TYPE	F	L	VOLTAGE WITHSTAND(KV)	A (MM)	B (MM)	C MAX (MM)	H (MM)
P <sub>i</sub> /P-6	M6	65	6	12	22	5	17
P <sub>i</sub> /P-8	M8	80	6	13.5	25	5	21
P <sub>i</sub> /P-10	M10	95	6	15	30	5	28
P <sub>i</sub> /P-12	M12	105	6	17	35	5	29